



Collaborate



Control



Communicate



Converse

AV lecterns, cabinets, media walls, video walls, collaboration tables, huddle spaces, boardroom and meeting room tables, control desks, server racks, screen stands / trolleys and sound management solutions to name a few

# Peripherals

## Description: Electric Cabinet Fan

19" CoolRaC Cabinet Exhaust Fan 80mm / 3" - 2 Units per cabinet section - 24 in total - NEW quiet exhaust fan unit has been designed to be fitted into sealed wooden cupboard style equipment enclosures, and enclosed equipment racks where hot air is not being expelled. These type of situations invariably cause thermal failure, as the in-board fans are just recycling hot air.  
Temp sensor inc.  
Each supplied with PSU.

**Product Code:**  
CP-1690



## Description: Single Arm Desk Mount

The BT7372 is a single arm desk mount made from durable aluminium with an anodised, polished finish. Suitable for use with screens up to 32", the arm features two swivel points plus 360° screen rotation at the interface, making this desk mount perfect for portrait or landscape mounting. The mount can be easily fixed to the rear or side of a desk or through a grommet hole and the integrated cable management ensures a neat and tidy installation.

**Product Code:**  
BT7372



## Description: B-Tech premium double screen desk mount

Designed for 2 screens up to 24" (61cm) / 9kg (20lbs)  
Integrated cable management. Fits screens with VESA mounting patterns: 75 x 75 and 100 x 100. Maximum extension: 457mm. Easy tilt adjustment +/- 40 Degree . Easy height adjustment using tool-less locking ring. Desk clamp and grommet fixings included.

**Product Code:**  
BT7374



## Description: B-Tech full motion double arm screen desk mount

Designed for screens up to 24" (61cm) / 9kg (20lbs)  
Integrated cable management. Fits screens with VESA mounting patterns: 75 x 75 and 100 x 100. Features 3 swivel points: 360 degree pole, 360 degree at pivot and 180 degree at interface. Maximum extension: 560mm. Easy tilt adjustment +/- 40 Degree. Easy height adjustment using tool-less locking ring. Desk clamp and grommet fixings included.

**Product Code:**  
BT7383



## Description: B-Tech full motion double screen desk mount

Designed for screens up to 24" (61cm) / 9kg (20lbs)  
Integrated cable management. Fits screens with VESA mounting patterns: 75 x 75 and 100 x 100. Features 3 swivel points: 360 degree pole, 360 degree at pivot and 180 degree at interface. Maximum extension: 560mm. Easy tilt adjustment +/- 40 Degree. Easy height adjustment using tool-less locking ring. Desk clamp and grommet fixings included.

**Product Code:**  
BT7384



# Peripherals

## Description: Quadra open frame equipment rack - Flat packed

The lightweight and robust open frame 19" rack  
Designed for 19" standard rack plates. Steel frame work powder coated black. Earth bonding studs in the base. Comes flat packed in a box with all fittings.  
Racks can be bolted together to make one tall rack. 4x holes in all 4 corners for carpet castors or fixing a rack onto another rack.  
Includes 2x cable steel trays.  
Standard fitment for cage nuts and bolts (not supplied)

### Specifications

Q10UOFR - (wxhxd) 495mm x 510mm x 485mm (frame weight 7.25kg)

Q12UOFR - (wxhxd) 495mm x 598mm x 485mm (frame weight 7.5kg)

Q16UOFR - (wxhxd) 495mm x 775mm x 485mm (frame weight 8.25kg)

• **These equipment racks are available for next day dispatch**

### Product Code:

10UORF

12UOFR

16UOFR



## Description: Quadra pull out open frame rack drawer 360

The Quadra equipment rack drawer is on easy run glides which have a quick release catch for easy removal with a 360 degree turn table with lock.  
The drawer also benefits from a 360 degree turn table which is lockable via a cabinet key, this design feature enables access to the back of the equipment for service.  
This enables the integrator easy access to the equipment within the lectern or cabinet.  
The benefits of using this drawer are serviceability or hot swap in case of equipment break down and installation. Finished in black powder coat.

If you would like to be able to utilise one of our Quadra open frame equipment racks above, we can design any of our wooden lecterns to accommodate this pull out equipment drawer. Our design team will be pleased to work up a 3D visual and quote.

### Product Code:

QCREVOLVETRAY



## Description: Open frame rack sleeve

These wood sleeves allow the above open frame racks to be clad in a standard melamine or veneer. The sleeve has a base, top and 2 sides. We can make the sleeve deeper to allow a back and a door if required.

If this is of interest please enquire on a design and price.

Image shows a Quadra 16u open frame rack. Rack is supplied separate (see above)

### Product Code:

10UOFRBOX-MEL

10UOFRBOX-VEN

12UOFRBOX-MEL

12UOFRBOX-VEN

16UOFRBOX-MEL

16UOFRBOX-VEN



## Description: Under desk cable tower

The tower is manufactured out of 18mm mdf and all 4 sides clip together which means it is easier for install. To the top and bottom on the 200mm wide end panels are cable access holes 100mm x 30mm.

Finished in standard melamine, if you require a special finish please let us know and we will quote accordingly.

### Product Code:

TOWER2





# Peripherals

## Description: Wall mounted fixed glass VC shelf

This is a toughened glass semi circular shelf  
There are 2x wall mounting brackets to fit to the wall.

**Product Code:**  
GLASS-SHELF

Approximate size (mm)  
400 x 200 (WxD)



## Description: Folding laptop shelf

Folding laptop shelf for your lectern or cabinet.  
These can be in a standard melamine or veneer to match the lectern / cabinet. Under the folding laptop shelf we can cut into the side of the lectern or cabinet holes for either single gang or double gang cut outs for dry line backing boxes (backing boxes, plates etc to be fitted and supplied by the AV integrator)  
We manufacture a wall mounted folding laptop shelf which has a wooden back plate.

**Product Code:**  
LTS01-MEL  
LTS01-VEN  
WM-LTS01-MEL (wall mounted)  
WM-LTS01-VEN (wall mounted)

Approximate size (mm)  
18 x 440 x 555 (ThxWxD)

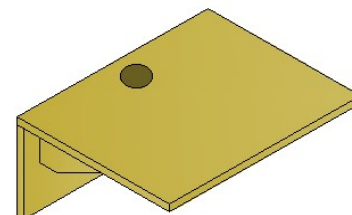


## Description: Wall mounted fixed VC shelf

Fixed shelf for your video conference camera.  
These can be in a standard melamine or veneer to match any lectern / cabinet Quadra supplied.  
This is a standard item but we can manufacture different sizes bespoke to you.

**Product Code:**  
VCSHELF-MEL  
VCSHELF-VEN

Approximate size (mm)  
250 x 550 x 350 (HxWxD)



## Description: Danby replacement front door

Danby replacement door comes without handle, lock and hinges.

**Product Code:**  
DANBY-DOOR-MEL  
DANBY-DOOR-VEN



## Description: Swainby replacement top only

Swainby replacement top only.

**Product Code:**  
SWAINBY-W/TOP-MEL  
SWAINBY-W/TOP-VEN



## Description: Speaker pattress

Plywood or MDF speaker pattress.  
These are 595 x 595 to fit on top of a suspended ceiling tile. We will cut a hole into the centre of the pattress so you can fit your ceiling speaker into the soft tile without damage to the back of the tile. Cut-out size will need to be confirmed at point of order.

**Product Code:**  
SPKPATT

Approximate size (mm)  
6 x 595 x 595 (HxWxD)



# Peripherals

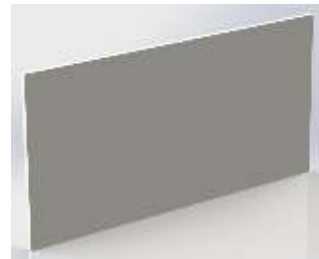
## Description: Wall pattress

MDF melamine wall pattress.

These wall pattresses are for when you are mounting a screen or projector onto a plaster board wall. These will span the wall and you will be able to fix into the uprights within the wall and spread the weight over a larger surface area. Please confirm the finish when ordering. If you require an alternative size not listed below please let us know and we will supply you a quote. These pattresses are made from 18mm MDF and finished in a standard melamine with ABS/PVC edging all around.

### Product Code:

400x400x18PAN-MEL  
600x300x18PAN-MEL  
1650x1250x18PAN-MEL  
1800x1200x18PAN-MEL



## Description: Cable grommets – nickel

Desk cable tidies keep computer, telephone and other cables tidy around the work space. Slim grommet with brush insert. Matt Nickel plated. 80mm diameter.

### Product Code:

80MMGROM-NP



## Description: Cable grommets - plastic

Desk cable tidies keep computer, telephone and other cables tidy around the work space. Plastic ABS.

Black, Dark Brown, Light Brown, Light Grey, White.  
80mm diameter.

### Product Code:

50MMGROM-BLK (black)  
80MMGROM-BLK (black)  
80MMGROM-WH (white)  
80MMGROM-L/GREY (light grey)  
80MMGROM-L/BROWN (light brown)  
80MMGROM-D/BROWN (dark brown)



## Description: Carpet castors

Carpet castors which are 85mm tall, these are swivel castors for ease of manoeuvring. We can supply 4x non-locking or we can supply you 2x non-locking and 2x locking.

### Product Code:

CASTORPACK (4x non locking)  
CASTORPACK-L (4x but 2x locking)



## Description: Packing crate

If you are shipping equipment abroad or even within the UK, Quadra can manufacture a wooden packing crate to your requirements.

This can be collected this from Quadra or we can arrange for it to be delivered to you at cost, please asked for details.

### Product Code:

CRATE



## Description: Routing

We offer a custom routing service for inseting AV connection ports into existing furniture.

### Product Code:

ROUTING





Acoustics  
Book 1, 2024



All systems, cabinets, media walls, collaborative tables, huddle spaces, boardrooms and meeting rooms. Fully configurable, secure, reliable, scalable and future-proof. All products are designed to be used in a variety of ways.

Classic & Contemporary Lecterns  
Book 2, 2024



All systems, cabinets, media walls, collaborative tables, huddle spaces, boardrooms and meeting rooms. Fully configurable, secure, reliable, scalable and future-proof. All products are designed to be used in a variety of ways.

Educational Lecterns  
Book 3, 2024



All systems, cabinets, media walls, collaborative tables, huddle spaces, boardrooms and meeting rooms. Fully configurable, secure, reliable, scalable and future-proof. All products are designed to be used in a variety of ways.

AV Cabinets & Credenzas  
Book 4, 2024



All systems, cabinets, media walls, collaborative tables, huddle spaces, boardrooms and meeting rooms. Fully configurable, secure, reliable, scalable and future-proof. All products are designed to be used in a variety of ways.

Tables and Desks  
Book 5, 2024



All systems, cabinets, media walls, collaborative tables, huddle spaces, boardrooms and meeting rooms. Fully configurable, secure, reliable, scalable and future-proof. All products are designed to be used in a variety of ways.

Control room & Inquiry rooms  
Book 6, 2024



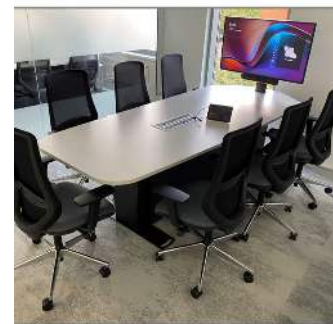
All systems, cabinets, media walls, collaborative tables, huddle spaces, boardrooms and meeting rooms. Fully configurable, secure, reliable, scalable and future-proof. All products are designed to be used in a variety of ways.

Media Walls & Screen Surrounds  
Book 7, 2024



All systems, cabinets, media walls, collaborative tables, huddle spaces, boardrooms and meeting rooms. Fully configurable, secure, reliable, scalable and future-proof. All products are designed to be used in a variety of ways.

Collaboration Tables & Screen lowers  
Book 8, 2024



All systems, cabinets, media walls, collaborative tables, huddle spaces, boardrooms and meeting rooms. Fully configurable, secure, reliable, scalable and future-proof. All products are designed to be used in a variety of ways.

Media & Signage Towers  
Book 9, 2024



All systems, cabinets, media walls, collaborative tables, huddle spaces, boardrooms and meeting rooms. Fully configurable, secure, reliable, scalable and future-proof. All products are designed to be used in a variety of ways.

Piyo Telesys & Stands  
Book 10, 2024



All systems, cabinets, media walls, collaborative tables, huddle spaces, boardrooms and meeting rooms. Fully configurable, secure, reliable, scalable and future-proof. All products are designed to be used in a variety of ways.

Kaigi Booths  
Book 11, 2024



All systems, cabinets, media walls, collaborative tables, huddle spaces, boardrooms and meeting rooms. Fully configurable, secure, reliable, scalable and future-proof. All products are designed to be used in a variety of ways.

Connectivity  
Book 12, 2024



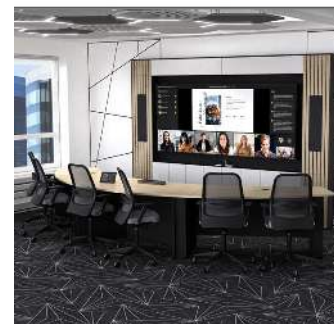
All systems, cabinets, media walls, collaborative tables, huddle spaces, boardrooms and meeting rooms. Fully configurable, secure, reliable, scalable and future-proof. All products are designed to be used in a variety of ways.

Task & Meeting Chairs  
Book 13, 2024



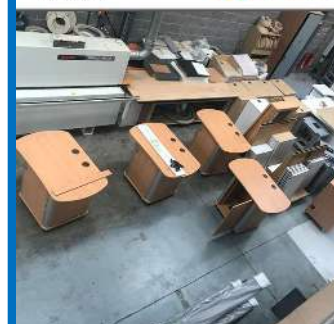
All systems, cabinets, media walls, collaborative tables, huddle spaces, boardrooms and meeting rooms. Fully configurable, secure, reliable, scalable and future-proof. All products are designed to be used in a variety of ways.

Teams Room Furniture  
Book 14, 2024



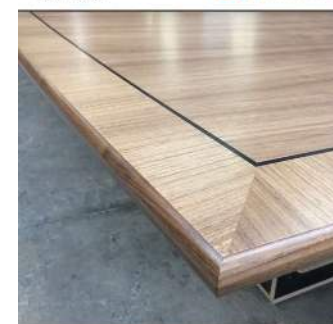
All systems, cabinets, media walls, collaborative tables, huddle spaces, boardrooms and meeting rooms. Fully configurable, secure, reliable, scalable and future-proof. All products are designed to be used in a variety of ways.

Peripherals  
Book 15, 2024



All systems, cabinets, media walls, collaborative tables, huddle spaces, boardrooms and meeting rooms. Fully configurable, secure, reliable, scalable and future-proof. All products are designed to be used in a variety of ways.

Stands & Hitches  
Book 16, 2024



All systems, cabinets, media walls, collaborative tables, huddle spaces, boardrooms and meeting rooms. Fully configurable, secure, reliable, scalable and future-proof. All products are designed to be used in a variety of ways.





## About Us.

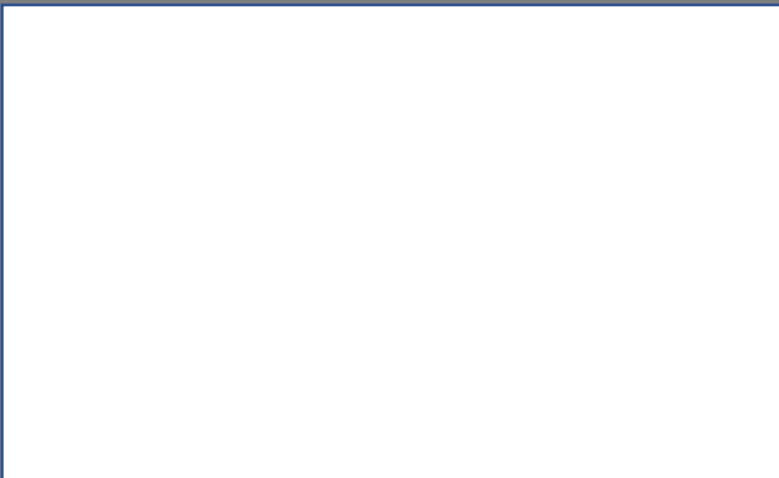
We design and install prebuilt and bespoke AV furniture, Media walls, lecterns, credenzas, stands, trolleys, cabinets, acoustic treatments and much more.

We do this using the latest professional CNC machinery and only the best core materials. Located in York with close access to the motorway network we are conveniently located to deliver and install across the UK.

Quadra AV Furniture Ltd  
Head Office : Glaisdale Road,  
Northminster Business Park,  
Upper Poppleton, York, YO26 6QT

Web - [www.qavf.co.uk](http://www.qavf.co.uk)  
Telephone - 01904 528 519  
Email - [enquiries@qavf.co.uk](mailto:enquiries@qavf.co.uk)

## Your Local Quadra Partner:



Quadra Concepts UK Limited trading as Quadra AV Furniture is registered in England and Wales.  
Reg No. 06322818 – VAT No. GB 916 3405 38

