



Collaborate



Control



Communicate



Converse

AV lecterns, cabinets, media walls, video walls, collaboration tables, huddle spaces, boardroom and meeting room tables, control desks, server racks, screen stands / trolleys and sound management solutions to name a few

AV Housings

Description: Desktop 2U rack sleeve

Desktop rack sleeve, this is designed for your control room, corner of an office etc. It has 1x 2U's worth of rack strip either side.

We can also manufacture this for any amount of rack units you require, please enquire for prices and visuals. Large range of melamine and veneer finishes available

Product Code:

2U-DTSLEEVE-MEL (melamine)

2U-DTSLEEVE-VEN (veneer)

Approximate size (mm)
126 x 535 x 532 (HxWxD)



Description: Wall mount 4U rack sleeve

Wall mounting rack sleeve, this is designed for your control room, corner of a meeting room etc. It has 1x 4U's worth of rack strip either side to the top, the rack mount kit will be dropped in vertically.

We can also manufacture this for any amount of rack units you require, please enquire for prices and visuals. Large range of melamine and veneer finishes available

Product Code:

4U-WMSLEEVE-MEL (melamine)

4U-WMSLEEVE-VEN (veneer)

Approximate size (mm)
500 x 625 x 221 (HxWxD)



Description: Desktop housing for controllers and 2u rack space

Desktop housing to accommodate a monitor or controller. If you can let us know what you would like to install into the top we can work out if it will fit, if it is too small we will design a unit that will fit your equipment, with 2U rack strip mounts.

We can also manufacture this for any amount of rack units you require, please enquire for prices and visuals. Large range of melamine and veneer finishes available

Product Code:

2UDSK-HOUSING-MEL (melamine)

2UDSK-HOUSING-VEN (veneer)

Approximate size (mm)
298 x 525 x 367 (HxWxD)



Description: Confidence monitor housing on castors

Angled oak veneer housing for Samsung 22" TV. Housing will have a removable back panel for access. Cable management and to be sat on castors (2x locking). Housing to have removable lid to protect screen with handles to be positioned either side of housing and on the lid.

Large range of melamine and veneer finishes available

Product Code:

CONFMON-MEL (melamine)

CONFMON-VEN (veneer)

Approximate size (mm)
489 x 715 x 606 (HxWxD)



AV Credenza's

Description: Magic mobile AV shelf cabinet

AV shelf cabinet

Lockable door which opens 270 degree. 3x fixed internal shelves. Cable ways are via 80mm cable grommet holes top. Single gang dry line box and cable grommet to side rear low level on the RHS as used. Locking rear door access panel. Ventilation grills to the side panels. Folding laptop shelf on the RHS as used. 4 swivel carpet castors fitted (2x Locking). Standard finish in grey melamine (code U112)

Large range of melamine and veneer finishes available.

Optional extras include vinyl logo, control panel housings and monitor

Arms (please see peripherals section for information and pricing)



Product Code:

MAGICMOB-MEL (melamine)

MAGICMOB-VEN (veneer)

Approximate size (mm)

780 x 625 x 565 (HxWxD)

Description: Farndale single AV shelf cabinet

Lockable door. Internally can have 2x adjustable internal shelves, 2x rack strip or Quadra open frame rack. 80mm cable grommet holes top and both sides. Removable locking rear access panel. Ventilation grills top and bottom. 4 swivel carpet castors fitted (2x locking).

Standard finish in grey melamine (code U112)

Large range of melamine and veneer finishes available.

Optional extras include 10U, 12U or 16U open frame rack, vinyl logo, control panel housings and monitor arms (please see peripherals section for information and pricing)

These are generally in stock in grey melamine for next day dispatch.



Product Code:

FARNDALE-MEL (melamine)

FARNDALE-VEN (veneer)

Approximate size (mm)

970 x 578 x 629 (HxWxD)

Description: Farndale double AV shelf cabinet

Double lockable doors. Adjustable internal shelves or Quadra open frame rack. 80mm cable grommet holes top and both sides. Removable locking rear access panel.

Ventilation grills top and bottom. 4 swivel carpet castors fitted (2x locking). Standard finish in grey melamine (code U112)

Large range of melamine and veneer finishes available.

Optional extras include 10U, 12U or 16U open frame rack, vinyl logo, control panel housings and monitor arms (please see peripherals section for information and pricing)



Product Code:

FARNDALE-DOU-MEL (melamine)

FARNDALE-DOU-VEN (veneer)

Approximate size (mm)

970 x 1138 x 629 (HxWxD)

Description: Swainby rack or shelf cabinet

The equipment cabinet is delivered fully assembled.

Lockable door fitted with fully adjustable hinges. Rear panel is removable and is fitted on keku clips for ease of access. Internal options are rack strip to the front of the cabinet to accommodate 16u of equipment, adjustable shelves or Quadra open frame rack . 80mm cable grommet holes top and bottom. 2x vent grills fitted to the front panel. 4x feet/glides.

Large range of melamine and veneer finishes available.

Optional extras include 10U, 12U or 16U open frame rack, vinyl logo, control panel housings, monitor arms, Icab Cool and castors (please see peripherals section for information and pricing)

These are generally in stock in oak melamine for next day dispatch.

Product Code:

SWAINBY-SH-MEL (With adjustable Shelves) (melamine)

SWAINBY-16U-MEL (With 16U rack strip)

SWAINBY-SH-VEN (With adjustable Shelves)

SWAINBY-16U-VEN (With 16U rack strip)

Approximate size (mm)

846 x 573 x 633 (HxWxD)



AV Credenza's

Description: Swainby double rack or shelf cabinet

Double Swainby AV cabinet.

2 compartments. Lockable doors fitted with fully adjustable hinges. Front panels are removable and are fitted on keku clips for ease of access. Internal options are rack strip to the front of the cabinet to accommodate 16U of equipment, adjustable shelves, Quadra open frame rack or a combination . 80mm cable grommet holes top and bottom. 2x vent grills fitted to each front panel. Feet/glides.

Large range of melamine and veneer finishes available.

Optional extras include 10U, 12U or 16U open frame rack, vinyl logo, control panel housings, monitor arms and Icab Cool (please see peripherals section for information and pricing)

Product Code:

SWAINBY-DOU-SH-MEL (With adjustable Shelves) (melamine)

SWAINBY-DOU-16U-MEL (With 16U rack strip)

SWAINBY-DOU-SH-VEN (With adjustable Shelves)

SWAINBY-DOU-16U-VEN (With 16U rack strip)

Approximate size (mm)
846 x 1118 x 633 (HxWxD)



Description: Swainby triple rack or shelf cabinet

Triple Swainby AV cabinet.

3 compartments. Lockable doors fitted with fully adjustable hinges. Front panels are removable and are fitted on keku clips for ease of access. Internal options are rack strip to the front of the cabinet to accommodate 16U of equipment, adjustable shelves, Quadra open frame rack or a combination . 80mm cable grommet holes top and bottom. 2x vent grills fitted to each front panel. Feet/glides.

Large range of melamine and veneer finishes available.

Optional extras include 10U, 12U or 16U open frame rack, vinyl logo, control panel housings, monitor arms and Icab Cool (please see peripherals section for information and pricing)

Product Code:

SWAINBYTRI-SH-MEL (With adjustable Shelves) (melamine)

SWAINBYTRI-16U-MEL (With 16U rack strip)

SWAINBYTRI-SH-VEN (With adjustable Shelves)

SWAINBYTRI-16U-VEN (With 16U rack strip)

Approximate size (mm)
846 x 1663 x 633 (HxWxD)



Description: Classic shelf or rack cabinet

Traditional Single cabinet.

Internal options are Quadra open frame rack or adjustable shelves. Lockable doors fitted with fully adjustable hinges. 80mm cable grommet holes top and bottom. Removable rear panel for access, includes ventilation grills (as required). 4x swivel carpet castors fitted.

Large range of melamine and veneer finishes available.

Optional extras include 10U, 12U or 16U open frame rack, vinyl logo, control panel housings, monitor arms and Icab Cool (please see peripherals section for information and pricing)

Product Code:

SCAB01-MEL (Shelf cabinet)

SCAB01-VEN (Shelf cabinet)

10URCAB-MEL (10U rack cabinet - rack not included)

10URCAB-VEN (10U rack cabinet - rack not included)

12URCAB-MEL (12U rack cabinet - rack not included)

12URCAB-VEN (12U rack cabinet - rack not included)

16URCAB-MEL (16U rack cabinet - rack not included)

16URCAB-VEN (16U rack cabinet - rack not included)

Approximate size (mm)
930 x 682 x 687 (HxWxD)



AV Credenza's

Description: Classic double shelf & rack cabinet

Internal options are Quadra open frame rack or adjustable shelves. Lockable doors fitted with fully adjustable hinges. 2x 80mm cable grommet holes top and bottom. Removable rear panel for access, includes ventilation grills (as required). 4x swivel carpet castors fitted.

Large range of melamine and veneer finishes available.

Optional extras include 10U, 12U or 16U open frame rack, vinyl logo, control panel housings, monitor arms and Icab Cool (please see peripherals section for information and pricing)

Product Code:

16UDWRCAB-MEL (Shelf cabinet or rack)

16UDWRCAB-VEN (Shelf cabinet or rack)

Approximate size (mm)

930 x 1272 x 687 (HxWxD)



Description: Classic triple shelf & rack cabinet

Internal options are Quadra open frame rack or adjustable shelves. Lockable doors fitted with fully adjustable hinges. Removable rear panel for access, includes ventilation grills (as required). 4x swivel carpet castors fitted. Large range of melamine and veneer finishes available.

Optional extras include 10U, 12U or 16U open frame rack, vinyl logo, control panel housings, monitor arms and Icab Cool (please see peripherals section for information and pricing)

Product Code:

16U-TRI-RCAB-MEL (Shelf cabinet or rack)

16U-TRI-RCAB-VEN (Shelf cabinet or rack)

Approximate size (mm)

930 x 1800 x 687 (HxWxD)



Description: Classic shelf with keyboard drawer

Classic shelf cabinet with a shorter door and pull out keyboard draw.

Internal options are Quadra 10U open frame rack or an adjustable shelf. Lockable door fitted with fully adjustable hinges. 80mm cable grommet holes top and bottom.

Removable rear panel for access, includes ventilation grills (as required). 4x swivel carpet castors fitted.

Large range of melamine and veneer finishes available.

Optional extras include 10U open frame rack, vinyl logo, control panel housings, monitor arms and Icab Cool (please see peripherals section for information and pricing)

Product Code:

SCABK01-MEL

SCABK01-VEN

Approximate size (mm)

930 x 682 x 687 (HxWxD)



Description: Classic rack or shelf cabinet with smoked perspex door

Traditional Single cabinet with perspex panel in the single door.

Internal options are Quadra open frame rack or adjustable shelves. Lockable doors fitted with fully adjustable hinges. 80mm cable grommet holes top and bottom. Removable rear panel for access, includes ventilation grills (as required). 4x swivel carpet castors fitted.

Large range of melamine and veneer finishes available.

Optional extras include 10U, 12U or 16U open frame rack, vinyl logo, control panel housings, monitor arms and Icab Cool (please see peripherals section for information and pricing)

Product Code:

16URCAB01PERS-MEL

16URCAB01PERS-VEN

Approximate size (mm)

930 x 682 x 687 (HxWxD)



AV Credenza's

Description: Classic 26U rack cabinet

Internally at the top is space for a 10U open frame rack and 16U in the bottom. Lockable doors fitted with fully adjustable hinges. 80mm cable grommet holes top and bottom. Removable rear panel for access, includes ventilation grills (as required). 4x swivel carpet castors fitted.

Large range of melamine and veneer finishes available.

Optional extras include vinyl logo, control panel housings, monitor arms, 10U or 16U open frame rack and Icab Cool (please see peripherals section for information and pricing)

Product Code:

26URCAB-MEL
26URCAB-VEN

Approximate size (mm)
1490 x 682 x 687 (HxWxD)



Description: Classic 360 rack cabinet

Classic rack 360 cabinet, the doors are lockable and fitted with fully adjustable hinges. Removable rear panel for access, includes ventilation grills (as required) and a cable grommet in the top rear centre. 4x swivel carpet castors fitted. Internally will be space for a pull out and turn open frame equipment rack which sits on an equipment rack drawer which is on easy run drawer glides which have a quick release catch for drawer removal with a 360 degree locking turntable.

Includes an open frame rack

Optional extras include vinyl logo, control panel housings, monitor arms and Icab Cool (please see peripherals section for information and pricing)

Product Code:

CLASSIC360-10U-MEL CLASSIC360-12U-MEL CLASSIC360-16U-MEL
CLASSIC360-10U-VEN CLASSIC360-12U-VEN CLASSIC360-16U-VEN



Approximate size (mm)
1085 x 682 x 712 (HxWxD)

Description: Classic style teacher desk

Classic style teacher desk / workstation.

Full flat worktop. 2x 80mm cable grommets. Leg space under the worktop. Shelf or rack cabinet to either the **RHS** or the **LHS**. Internal options are Quadra open Frame rack or an adjustable shelf. Removable rear panel with vent grills. Large range of melamine and veneer finishes available.

Optional extras include 10U or 12U open frame rack, control panel housings, monitor arms and Icab Cool (please see peripherals section for information and pricing)

Product Code:

CLASSIC-TD-RHS-10U-M
CLASSIC-TD-RHS-10U-V
CLASSIC-TD-RHS-12U-M
CLASSIC-TD-RHS-12U-V
CLASSIC-TD-RHS-SH-M
CLASSIC-TD-RHS-SH-V

Approximate size (mm)
750 x 1612 x 687 (HxWxD)



Description: L-shaped technician desk

Cabinet can be on the **LHS** or **RHS**. Internal options are 12U Quadra open frame rack or 2 adjustable shelves. Either side of the cabinet there are ventilation grills. In the worktop there are 3x 80mm cable grommets and an L shape cable beam to the rack. Large range of melamine and veneer finishes available.

Optional extras include 10U or 12U open frame rack, control panel housings, monitor arms and Icab Cool (please see peripherals section for information and pricing)

Product Code:

LSHAPETECHDESK-LHS-M
LSHAPETECHDESK-LHS-V

Approximate size (mm)
740 x 1800 x 1568 (HxWxD)



AV Credenza's

Description: Pull out 360 Rack AV Cabinet

2 compartments

Can have 16U, 12u or 10U pull out 360 Quadra Racks

Based on a single pull-out Open frame 360 rack to one compartment and 2 adjustable shelves to the other.

Product codes below is for 1x Rack either LHS or RHS and 2x Adjustable shelves to the other.

Product Code:

CLASSICDOU360-10U-MEL CLASSICDOU360-12U-MEL CLASSICDOU360-16U-MEL

CLASSICDOU360-10U-VEN CLASSICDOU360-12U-VEN CLASSICDOU360-16U-VEN



Approximate size (mm)
1085 x 1272 x 712 (HxWxD)

Description: 3 bay Contemporary AV Cabinet

Contemporary Triple Credenza for AV or just Boardroom / meeting Room storage. Can hold 10U open frame racks or shelving.

The 3 compartments are covered with doors on push latches.

Finish shown is Grey Nebraska Oak Melamine top and sides, Black Melamine carcass and Stone Grey Melamine Doors.



Product Code:

CONT3BAY-CAB-MEL

Approximate size (mm)
720 x 1773 x 640 (HxWxD)

AV Credenza's

Description: Classic 2.6m credenza

4 compartments. Internal options are Quadra open frame rack, adjustable shelves or a combination. Removable hatch in the base for cables if required. Carcass to have alloy corner posts powder coated in black finish. To the back of the open frame rack compartments there will be a removable panels with a cut out for an Icab Cool thermostatic fan.

Large range of melamine and veneer finishes available.

Optional extras include 10U, 12U or 16U (size may alter) open frame rack and Icab Cool (please see peripherals section for information and pricing)

Product Code:

26CREDENZA-MEL
26CREDENZA-VEN

Approximate size (mm)
800 x 730 x 2600 (HxWxD)



Description: 2.6m Credenza for large screens

Credenza for large screens up to 85". 3 compartments. Internal options are rack strip, Quadra open frame rack, 2x adjustable shelves or a combination. Each compartment to have a removable hatch in the base for cables if required. Alloy corner posts. Fitted to the work top is the top section of a QC5585 with screen bracket. Screen size TBC by integrator. Large range of melamine and veneer finishes available.

Optional extras include 10U, 12U or 16U (size may alter) open frame rack and Icab Cool (please see peripherals section for information and pricing)

Product Code:

26CREDENZA-PIQO-M
26CREDENZA-PIQO-V

Approximate size (mm)
635 x 750 x 2600 (HxWxD)



Description: 1.7m Credenza for medium size screens

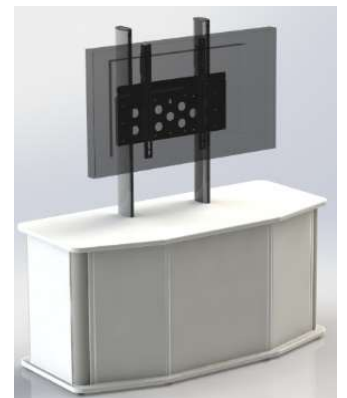
Credenza for medium screens up to 55". 3 compartments. Internal options are rack strip, Quadra open frame rack, adjustable shelves or a combination. Each compartment to have a removable hatch in the base for cables if required. Alloy corner posts. Fitted to the work top is the top section of a QC5585 with screen bracket. Screen size TBC by integrator. Large range of melamine and veneer finishes available.

Optional extras include 10U, 12U or 16U open frame rack and Icab Cool (please see peripherals section for information and pricing)

Product Code:

17CREDENZA-PIQO-M
17CREDENZA-PIQO-V

Approximate size (mm)
820 x 750 x 1710 (HxWxD)



Description: Flip top computer desks

Single or double flip top desks, each flip compartment can house a screen mounted to the back of the worktop so when open it is ready for the user. When the top is open there is a keyboard shelf which will pull up to worktop height and retract when not needed. PC is fitted under the worktop via a PC steel housing, these are designed for a slim line tower PC (100mm max).

Sizes are approximate

Product Code:

19FT-SIN-DSK (single desk 750 x 750 x 720mm)
19FT-DOU-DSK (double desk 750 x 1500 x 720mm)
21FT-SIN-DSK (single desk 850 x 850 x 720mm)
21FT-DOU-DSK (double desk 850 x 1700 x 720mm)
24FT-SIN-DSK (single desk 850 x 850 x 720mm)
24FT-DOU-DSK (double desk 850 x 1700 x 720mm)



AV Credenza's

Description: Slimline Cabinet

Slim line shelf cabinet originally designed for the Logitech Rally bar but can have other VC cameras sat on the top. Doors feature flush Pull handles and powder coat steel legs. Large range of melamine and veneer finishes available. Optional extras include 10U, 12U or 16U (size may alter) open frame rack and Icab Cool (please see peripherals section for information and pricing)

Product Code:
SLIM-CREDENZA

Approximate size (mm)
870x 950 x 310 (HxWxD)



Shelf & Projector Units

Description: 900mm display cabinet

Display cabinet with glass shelves and doors / storage below.
3x glass shelves in the upper section of the cabinet with glass opening doors. Shelves to be 10mm thick toughened and the doors to be 6mm thick toughened clear glass.
Cabinet below for storage with twin doors on fully adjustable hinges including handles.
If you require a different size, please ask as we will be delighted to work up a design and quote.

Product Code:

DISPLAY-CAB9-MEL
DISPLAY-CAB9-VEN

Approximate size (mm)
2050 x 900 x 400 (HxWxD)



Description: Projector cabinet

Projector Stand.
Designed for the projector to sit on the worktop inside the vented surround.
Lockable twin door cabinet below. Each corner will have an alloy curved corner post.
The unit will be sat on plastic glides.
Large range of melamine and veneer finishes available.
If you would like a projector housing designed for your own specific projector, please do get in touch! We would need to know the footprint of the projector and the height of the worktop where the projector is to sit.
We can also design cabinets to fit projectors inside and upside down if required.

Product Code:

PROJCAB01-MEL
PROJCAB01-VEN

Approximate size (mm)
680 x 905 x 1500 (HxWxD)



Description: Academy Eco projector cabinet

Projector Stand.
Designed around the Academy Eco lectern for the projector to sit on an adjustable worktop which is hinged to the front.
Lockable door to the rear of the cabinet. Each corner will have an alloy curved corner post.
The unit will be sat on plastic glides.
Large range of melamine and veneer finishes available.

If you would like a projector housing designed for your own specific projector, please do get in touch!

We would need to know the footprint of the projector and the height of the worktop where the projector is to sit.

We can also design cabinets to fit projectors inside and upside down if required.

Product Code:

ACADECO-PROJ-T-M
ACADECO-PROJ-T-V



Finishes

Description: Standard Melamine



Maple 0375



Windsor Oak 1929



Bavaria Beech 0381



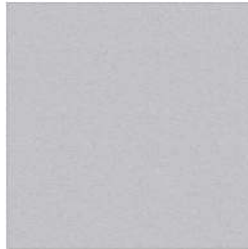
Aida Walnut H3704



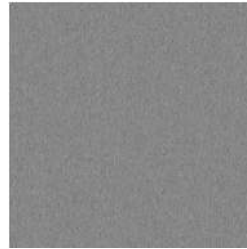
Verona Cherry H1615



White K101



Stone Grey 0112



Dust Grey U732

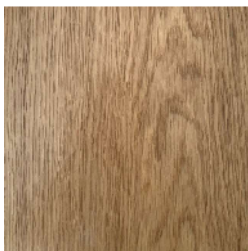


Graphite Grey 0162



Black 0190

Description: Real Wood Veneer



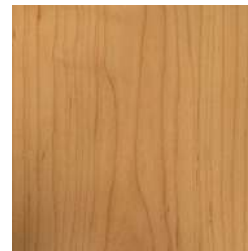
European Oak



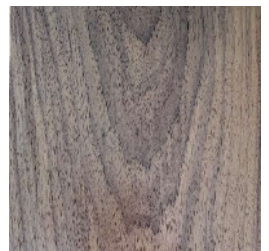
American White Oak



Crown Cut Ash



Crown Maple



Crown American Walnut

Quadra AV Furniture source the highest quality hardwoods and real wood veneers. The varying grain and figure of these woods genuinely emphasise the natural beauty and individuality of the material. No two pieces of timber are identical and there will be natural variations in the grain, knots and colouring. This arises from natural minerals in the wood.



If you have a specific finish in mind, please contact us with details and we will source samples for you.

We work with all the main manufacturers including Kronospan, Egger and Formica.

We also work with specialist veneer companies who have a vast array of stock from exotic, bold, warm, fresh and modern veneers.

Decorative laminate is a mainstay of commercial interior design and Quadra can offer the latest designs and textures as well as classic best sellers.

Acoustics
Book 1, 2024



All systems, cabinets, media walls, collaborative tables, huddle spaces, boardrooms and meeting rooms. Fully configurable, secure, mobile, scalable, simple to use and easy to manage. All systems are available in a range of sizes.

Classic & Contemporary Lectures
Book 2, 2024



All systems, cabinets, media walls, collaborative tables, huddle spaces, boardrooms and meeting rooms. Fully configurable, secure, mobile, scalable, simple to use and easy to manage. All systems are available in a range of sizes.

Educational Lecterns
Book 3, 2024



All systems, cabinets, media walls, collaborative tables, huddle spaces, boardrooms and meeting rooms. Fully configurable, secure, mobile, scalable, simple to use and easy to manage. All systems are available in a range of sizes.

AV Cabinets & Credenzas
Book 4, 2024



All systems, cabinets, media walls, collaborative tables, huddle spaces, boardrooms and meeting rooms. Fully configurable, secure, mobile, scalable, simple to use and easy to manage. All systems are available in a range of sizes.

Tables and Desks
Book 5, 2024



All systems, cabinets, media walls, collaborative tables, huddle spaces, boardrooms and meeting rooms. Fully configurable, secure, mobile, scalable, simple to use and easy to manage. All systems are available in a range of sizes.

Control room & Inquiry rooms
Book 6, 2024



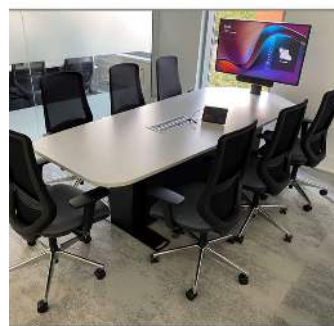
All systems, cabinets, media walls, collaborative tables, huddle spaces, boardrooms and meeting rooms. Fully configurable, secure, mobile, scalable, simple to use and easy to manage. All systems are available in a range of sizes.

Media Walls & Screen Surrounds
Book 7, 2024



All systems, cabinets, media walls, collaborative tables, huddle spaces, boardrooms and meeting rooms. Fully configurable, secure, mobile, scalable, simple to use and easy to manage. All systems are available in a range of sizes.

Collaboration Tables & Screen lowers
Book 8, 2024



All systems, cabinets, media walls, collaborative tables, huddle spaces, boardrooms and meeting rooms. Fully configurable, secure, mobile, scalable, simple to use and easy to manage. All systems are available in a range of sizes.

Media & Signage Towers
Book 9, 2024



All systems, cabinets, media walls, collaborative tables, huddle spaces, boardrooms and meeting rooms. Fully configurable, secure, mobile, scalable, simple to use and easy to manage. All systems are available in a range of sizes.

Piyo Teleyes & Stands
Book 10, 2024



All systems, cabinets, media walls, collaborative tables, huddle spaces, boardrooms and meeting rooms. Fully configurable, secure, mobile, scalable, simple to use and easy to manage. All systems are available in a range of sizes.

Kaigi Booths
Book 11, 2024



All systems, cabinets, media walls, collaborative tables, huddle spaces, boardrooms and meeting rooms. Fully configurable, secure, mobile, scalable, simple to use and easy to manage. All systems are available in a range of sizes.

Connectivity
Book 12, 2024



All systems, cabinets, media walls, collaborative tables, huddle spaces, boardrooms and meeting rooms. Fully configurable, secure, mobile, scalable, simple to use and easy to manage. All systems are available in a range of sizes.

Task & Meeting Chairs
Book 13, 2024



All systems, cabinets, media walls, collaborative tables, huddle spaces, boardrooms and meeting rooms. Fully configurable, secure, mobile, scalable, simple to use and easy to manage. All systems are available in a range of sizes.

Teams Room Furniture
Book 14, 2024



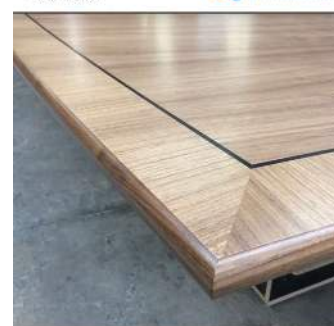
All systems, cabinets, media walls, collaborative tables, huddle spaces, boardrooms and meeting rooms. Fully configurable, secure, mobile, scalable, simple to use and easy to manage. All systems are available in a range of sizes.

Peripherals
Book 15, 2024



All systems, cabinets, media walls, collaborative tables, huddle spaces, boardrooms and meeting rooms. Fully configurable, secure, mobile, scalable, simple to use and easy to manage. All systems are available in a range of sizes.

Staircase Hatches
Book 16, 2024



All systems, cabinets, media walls, collaborative tables, huddle spaces, boardrooms and meeting rooms. Fully configurable, secure, mobile, scalable, simple to use and easy to manage. All systems are available in a range of sizes.



About Us.

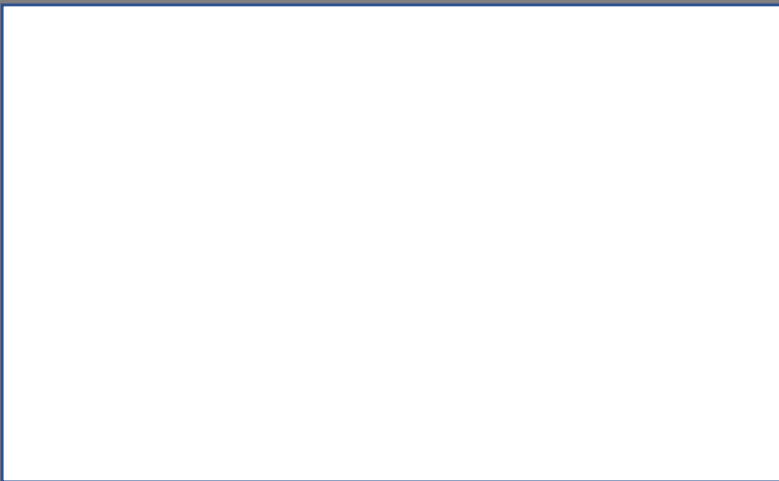
We design and install prebuilt and bespoke AV furniture, Media walls, lecterns, credenzas, stands, trolleys, cabinets, acoustic treatments and much more.

We do this using the latest professional CNC machinery and only the best core materials. Located in York with close access to the motorway network we are conveniently located to deliver and install across the UK.

Quadra AV Furniture Ltd
Head Office : Glaisdale Road,
Northminster Business Park,
Upper Poppleton, York, YO26 6QT

Web - www.qavf.co.uk
Telephone - 01904 528 519
Email - enquiries@qavf.co.uk

Your Local Quadra Partner:



Quadra Concepts UK Limited trading as Quadra AV Furniture is registered in England and Wales.
Reg No. 06322818 – VAT No. GB 916 3405 38

